



MD1-40 2P

MD1-40 4P

MD1-40 AC SPD

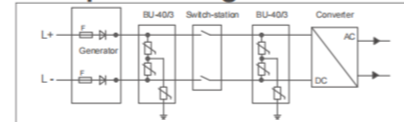


Overview

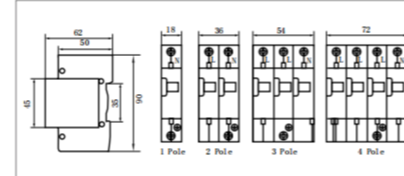
Surge protection device (in short SPD, alias: surge suppressor surge arrester) is suitable for TN-S, TN-C-S, TT, IT etc, power supply system of AC 50/60Hz, <380V, installed on the joint of LPZ1 or LPZ2 and LPZ3. It's designed according to IEC61643-1, GB18802.1, it adopts 35mm standard rail, there is a failure release mounted on the module of surge protection device, When the SPD fails in breakdown for over heat and over-current, the failure release will help electric equipments separate from the power supply system and give the indicationsignal, green means normal, red means abnormal, it also could be replaced for the module when has operating voltage.

- Inside over-current and over-heat protection, temperature control open circuit.
- Module design, convenient installation, could be replaced online.
- Time of response <25ns.
- The color of visible window shows operating status, green means normal, red means abnormal.

Principal Drawing



Dimensions(unit:mm)



Technical Specification

| AC Surge Protection Device | | | | |
|---|-----------------|------------|------------|---------|
| Model | MD1-40 | | | |
| Electrical Characteristics | | | | |
| Maximum continuous operating voltage Uc | 175V AC | 275V AC | 275V AC | 275V AC |
| Poles | 1P | 1P | 2P | 4P |
| Nominal discharge current In(8/20) s | 10kA | 20kA | 20kA | 20kA |
| Maximum discharge current Imax(8/20) s | 20kA | 40kA | 40kA | 40kA |
| Voltage protection level Up | 1.2kV | 1.8kV | 1.8kV | 1.8kV |
| Response Time | ≤25ns | | | |
| Standard | IEC/EN 61643-11 | | | |
| Control and Indication | | | | |
| Operating State/fault Indication | Green/Red | | | |
| Protection Module | Plug-in | | | |
| Connection and Installation | | | | |
| Hard cable mm ² | 4~25 | | | |
| Flexible cable mm ² | 4~16 | | | |
| Terminal Screws | M5 | | | |
| General Data | | | | |
| Dimension (W×H×D) | 18×68×90mm | 36×68×90mm | 72×68×90mm | |
| Operating Temperature Range | -40°C~+70°C | | | |
| Relative humidity | ≤95%(25°C) | | | |
| Installation mode | TH35-7.5/DIN35 | | | |
| Ingress protection | IP20 | | | |



MD1-C40 2P

MD1-C40 3P

MD1-C40 4P

MD1-C40 AC SPD



Overview

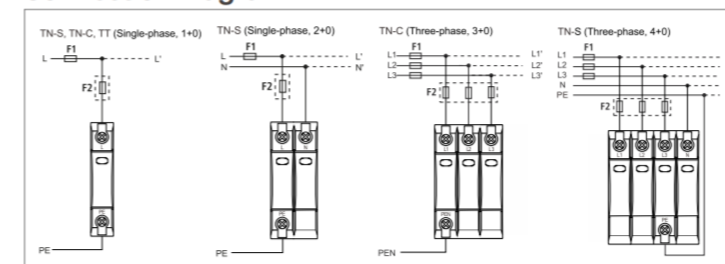
The AC Surge Protector Device MD1-C series is a group of Class I+II Surge Protective Devices. They are intended as a protection against indirect and low-intensity direct hits of lightning strokes. In standard three-phase TN-C grid, they provide protection to LPL III, IV requirements given in EN 62305 with total lightning current introduced into the electrical installation of 25 kA and total lightning stroke current 25 or 50 kA based on physical configuration and mutual position of grounding point of the lightning rod, grounding point of the electrical installation and place of SPD installation.

- Suitable for protection of electrical installations against transient overvoltage and indirect lightning strikes.
- Plug-in module design.
- Time of response < 25 ns.
- Indication window and optional remote-signaling contact helps users to know the status of device

Technical Specification

| PV AC Surge Protection Device | | | | | | |
|---|---|------|------|------|------|------|
| SPD according to EN61643-11/ IEC61643-11 | | | | | | |
| Type 1+2/Class I+II | | | | | | |
| Nominal AC Voltage Un (50/60Hz V~) | 230V | 230V | 230V | 230V | 230V | 400V |
| Maximum Continuous Operating Voltage Uc(V~) | 275V | 320V | 385V | 385V | 385V | 420V |
| Voltage protection Level Up(V~)kV | ≤1.0 | ≤1.2 | ≤1.8 | ≤2.0 | ≤2.2 | ≤2.8 |
| Nominal Discharge Current In (8/20s)kA | 5 | 10 | 20 | 30 | 40 | 60 |
| Maximum Discharge Current IImax(8/20s)kA | 10 | 20 | 40 | 60 | 80 | 100 |
| Response Time (ns) | <25 | | | | | |
| Test Standard | IEC61643.1, GB18802.1 | | | | | |
| Operating Environment (centigrade) | -40°C ~ +70°C | | | | | |
| Max Connection Line | 35mm ² hard wire/35mm ² strand wire copper line | | | | | |
| Recommended Connection L line | 16mm ² hard wire/25mm ² strand wire copper line | | | | | |
| Installation | Standard Rail 35mm | | | | | |
| Material of Outer Covering | Burning-proof Nylon | | | | | |

Connection Diagram



Dimensions(unit:mm)

