

# PEMC Series

DC Molded Case  
Circuit Breaker



# PROJOY

electric

– Switch To Safety! –

# PROJOY

electric

– Switch To Safety! –



## HIGH CRAFTSMANSHIP AND HIGH STANDARDS

Bright and Eye-catching

In line with the working habits of firefighters, it is conducive to quickly locate the operating location.



Small  
Volume



Short circuit  
Protection



Overload  
Protection



Flame  
Retardant



High Breaking  
Capability



Arcing  
Short



Complete  
Accessories



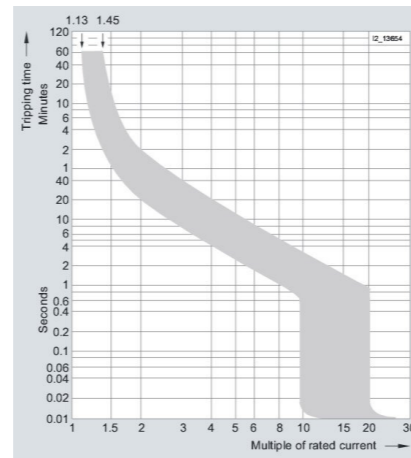
Multiple  
Wiring

## Technical data

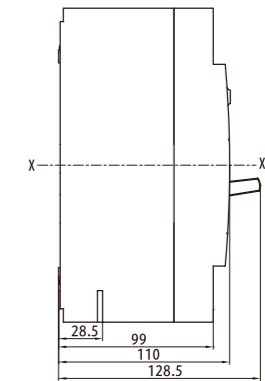
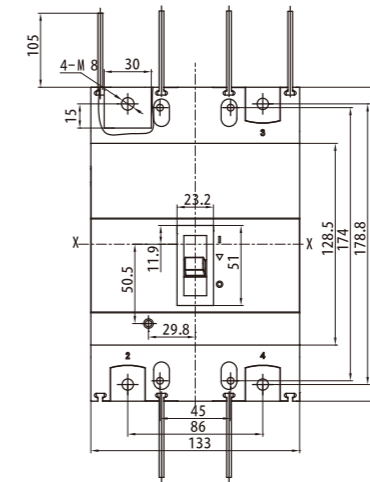
Standard		EN60947-2, AS/NZS IEC 60947. 2:2015.				
Type		PEMCX-Y				
Shell frame current INM (A)		250		400		630
Rated current In (A)		125/140/160/180/200/225/250			315/350/400	500/630
Number of poles		2P	2P	3P	4P	4P
Rated Operating Voltage UE (v)		DC500V	DC1000V	DC1500V	DC1500V	DC1500V
Rated working voltage Ue(V)		1000	1250	1500	1500	1500
Rated impulse voltage Uimp(kV)		8	8	12	12	12
Power frequency withstand voltage 1min(V)		3820	3820	3820	3820	3820
Rated impulse voltage UIMP (kV)		20	20	20	20	20
Rated Operating Short Circuit Breaking Capability ICS (Ka)		10	20	20	20	20
Arc Distance (mm)		≤50	≤50	≤50	≤100	≤100
Tional POperaerformance (times)	Electrical Life	2,000	2,000	2,000	2,000	2,000
	Mechanical Life	10,000	10,000	10,000	10,000	10,000
Isolation function		■	■	■	■	■
Types of accessories	Shunt release	□	□	□	□	□
	Alarm contact	□	□	□	□	□
	Auxiliary contact	□	□	□	□	□
Service temperature		The ambient air temperature is 40°C, the relative humidity of the atmosphere does not exceed 50% and the maximum relative humidity does not exceed 90% at 20°C				
Altitude		-25°C~+70°C, the average value within 24h does not exceed +35°C (above +40°C needs derating, and below -25°C needs custom LC low temperature products) ≤2000m (over 2000m needs derating to use)				
Class of use		A				
Protection level		IP20				
Pollution level		3				
INTERPHASE spacer		■				
	W	70	75	133	198	240
	H	145	190	200	257	270
	D	108	108	109	108	120
Certification		TUV, CE, CB, SAA				

■ Have □ Optional--none

## Tripping Characteristics

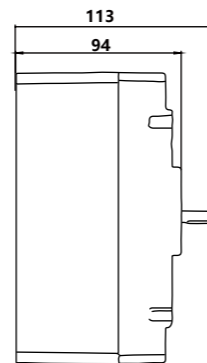
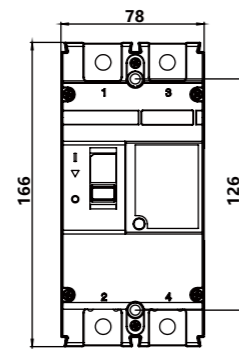


PEMC150-250/3P

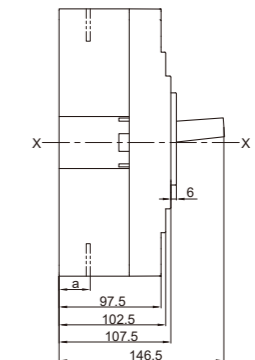
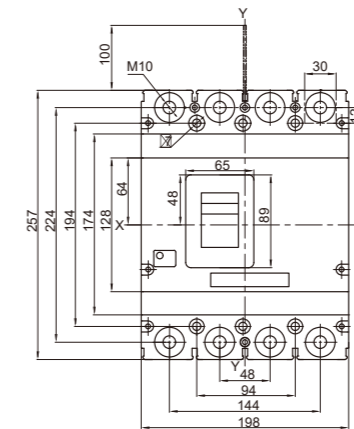


## Dimensions

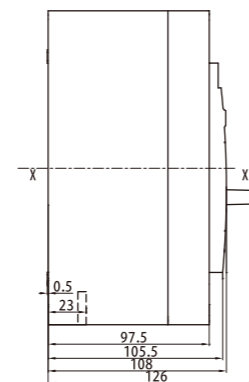
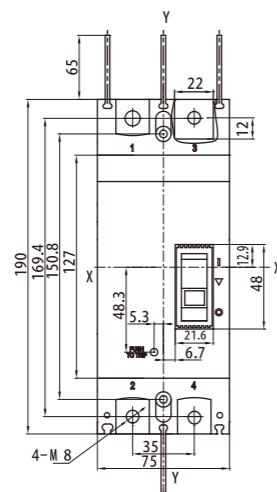
PEMC50-250/2P



PEMC150-400/4P



PEMC10-250/2P



PEMC150-630/4P

